



Forging Brass Copper Ingot HPb59-1 For Water Meter / Faucet / Valves

Our Product Introduction

Basic Information

- Place of Origin: CHINA
- Brand Name: TSTY
- Certification: ISO9001,ISO14001, ROHS
- Model Number: Brass Copper Ingot HPb59-1
- Minimum Order Quantity: 500KG-3000KG
- Price: USD/EURO
- Packaging Details: In Pallet
- Delivery Time: 30 Days after receiving the deposit
- Supply Ability: 30000 TONS/ YEAR



Product Specification

- ITEM NAME: BRASS INGOT
- Standard: ASTM,AISI,BS,JIS,GB,etc
- Highlight: 5 pound brass ingot, pure copper ingot

Product Description

1. Copper Ingot Forging Brass Copper Ingot HPb59-1

2. Application: Widely used in water related products, Die-Casting or Forging for water-meter, faucet, valves, coupling, fittings, sanitary ware, connectors, etc.

3. Competitive Advantage

(a). Various material ranges: Brass/Bronze/Lead-free/DZR

(b). Quality assurance: meet standards such as CHINA(GB), Europe (EN1982:1998) , USA (ASTM) ,Japan(JIS),

(c). Customized: produce alloy based on customer required composition

(d). Capacity: 30,000 Tons/annual

(e). Certificate: ISO9001, ISO14001, ROHS

Item	Copper Ingot Forging Brass Copper Ingot HPb59-1
Standard	ASTM,AISI,BS,JIS,GB,etc
OEM acceptance	Yes, customized composition is accepted
Shape	Square rod: 56x56x300 mm Weight: 8 Kg/pc
Finish	Natural or Mill
Process	frequency induction casting, Horizontal continuous casting
Inspection Equipments	Chemical composition analysis: Spectrometer Mechanic property test: Hardness,
Application	foundry for faucet, water-meter, valves, fittings, bushing, other castings etc.
Advantages	Good Fluidity after melting; Good performance for part finish of polishing and plating;
MOQ	500KG-3000KG
Sampe requested	Yes
Price Term	Ex-works, FOB,CIF, etc



COMPANY INTRODUCTION

Shanghai Tianshen Copper Group Co., Ltd., established in 1992, is a professional manufacturer for copper materials and parts. With the development of 25 years, Tianshen has set up two facilities in Shanghai and Zhejiang as the manufacture base. By adoption of the advanced and automatic equipments, Tianshen focuses on providing high quality products throughout various industries, such as faucet, water meter, valve, plumbing, power, connector etc. With the high quality, excellent service and competitive price, Tianshen has become long-term strategic suppliers for many well-known brands all over the world.

OUR PROCESS

Gravity casting
Centrifugal casting
Continuous casting / Extrusion

Automatic sand casting
Hot forging
Machining

OUR ADVANTAGES:

Comprehensive manufacture process from raw material to finished parts

---Devoted to whole process control and continuous improvements

Well equipped with modern devices and professional personnel

---Share advanced technology and experience

Multiple ways of production process from casting to forging

---Meet various needs of clients

Long-term partnership with top international companies

----Stay competitive and focus on excellence

MAIN PRODUCTS

Water meters and couplings
OEM Brass/Bronze/ Lead free parts
Brass/Bronze/ Lead free Ingots
Brass/Bronze/ Copper Coils/Strips

Valves and fittings
ETP Copper Bus bar
Brass/Bronze/ Lead free Rods
Brass/Bronze/ Copper Sheets/Plates



CAPTION FOUNDRY 铸造车间

车间介绍 Workshop is introduced

产品具有良好的延展性、深冲性、高电导和优良的导电性能特点,广泛用于建筑、机械制造、汽车、电子电器、集成电路、变压器、电缆及各种电气设备等行业。

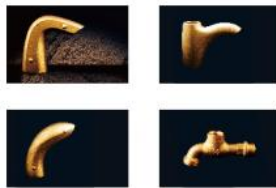
Be provided with excellent ductility, deep-drawing performance, plating conductivity etc., and widely used in architecture, mechanical manufacture, auto motor,



PRODUCT DISPLAY

产品展示

水龙头 THE TAP



水表壳 THE WATER METER SHELL



MACHINE SHOP 机加车间

车间介绍 Workshop is introduced

产品具有良好的延展性、深冲性、高电导和优良的导电性能特点,广泛用于建筑、机械制造、汽车、电子电器、集成电路、变压器、电缆及各种电气设备等行业。

Be provided with excellent ductility, deep-drawing performance, plating conductivity etc., and widely used in architecture, mechanical manufacture, auto motor,



PRODUCT DISPLAY

产品展示

水龙头 THE TAP



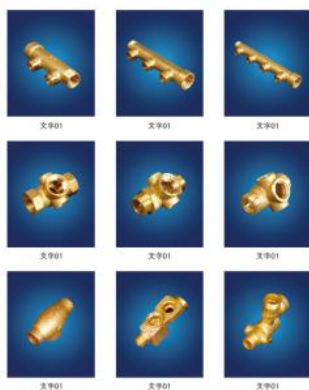
水表壳 THE WATER METER SHELL



PRODUCT DISPLAY

卫浴系列

产品展示 Bathroom series



水表系列

产品展示 Bathroom series





COPPER INGOT 铜锭系列

产品介绍 Product introduction

产品结晶细腻，流动性好，含铜量纯正，表面光亮，易抛光，广泛用于卫生洁具、装饰装潢等行业，尤其适用于重力浇铸和挤压铸造工艺生产水龙头和阀门等产品，能有效提高良品率，降低生产成本。

Be provided with high density, good liquidity, pure copper content, glossy surface, easy polishing etc., especially good at facade and valves by gravity die casting and low pressure casting with high qualified rate and low cost.

产品展示 Product display



紫铜锭
Copper ingot



无铅铜黄铜
Lead-free brass ingot



Hg99.99+ 高纯铜
Highly-pure copper ingot



COPPER BAR 铜棒系列

产品介绍 Product introduction

通过控制轧制工艺生产，具有良好热冲压和切削性能，备有圆棒、六角形等多种形状。

Be provided in round, square, hexagonal, with good hot stamping and cutting property by drawing and squeezing crafts.



产品展示 Product display



紫铜棒
Copper bar



黄铜棒
Brass bar



COPPER STRIPS 铜带、铝带系列

产品介绍 Product introduction

产品具有优良的延展性、深冲性、高电阻和优良的导电性等特点，广泛用于建筑、机械制造、汽车、电子电器、集成电路、变压器、电缆及各种电气设备等行业。

Be provided with excellent ductility, deep-drawing performance, plating conductivity etc., and widely used in architecture, mechanical manufacture, auto moto, electronic and electric equipments, integrated circuits, transformer, cable etc.

产品展示 Product display



磷铜带
Phosphor-copper strip



紫铜带
Copper strip



铝带
Aluminum strip



黄铜带
Brass strip



SPECTRO
direct reading spectrophotometer

125852

SPECTRO direct reading spectrophotometer

EQUIPMENT EXHIBITION

设备展示



万能试验机
Universal testing machine



硬度计
Hardness Gauge



硬度计
Hardness Gauge



透气计
Porosimeter



金相分析仪
Metallograph analyzer



三坐标
Coordinate

TESTING WORKSHOP

检测设备

设备介绍 Equipment is introduced

产品具有优良的延展性、深冲性、导电性和优良的导电性等特点，广泛用于建筑、机械制造、汽车、电子电路、集成电路、变压器、电机及各种电气设备等行业。

Be provided with excellent ductility, deep-drawing performance, plating conductivity etc., and widely used in architecture, mechanical manufacture, auto motor.



Forrest Xia

Sales representative

Shanghai Tianshen Copper Group Co., LTD

Add: Rm4 A-D Meixin Building, No. 728 Mid
 Xizang Rd, Shanghai, China Post Code:200001
 Tel: 0086-21- 63522470-114
 Fax: 0086-21-63521617
 Mob: 0086-13817033969
 Email: forrest@shtsty.cn
<http://www.shtsty.cn>